



## Tour de Vlei 2017

To be sailed at Vogelvlei Yacht Club

from

Saturday, 14<sup>th</sup> October 2017 to Sunday, 15<sup>th</sup> October 2017

### NOTICE OF RACE

#### 1. RULES

- 1.1. The regatta will be governed by the rules as defined in the Racing Rules of Sailing (RRS) 2017-2020.
- 1.2. Boats participating in this regatta shall conform to the Equipment Rules of Sailing (ERS) 2009-12, the Class Rules of their relevant classes, this Notice of Race and the Sailing Instructions.

#### 2. ADVERTISING

Advertising is permitted.

#### 3. ELIGIBILITY AND ENTRY

- 3.1. All competitors (Helmspersons and all other crew) shall be members in good standing of a Yacht Club. The Yacht Club name and membership details shall be stated on the entry form or crew list.
- 3.2. The regatta is open to all sailboats. Typical Class grouping:
  - Class 1: Optimist, Tera, O9"er etc dinghies under 12ft
  - Class 2: Dabchick, Laser, Xtra, Sonnet ...Dinghies under 15ft
  - Class 3: Dinghies with spinnaker over 15ft 29'er, 505, Fireball
  - Class 4: Multihulls
  - Class 5: Keelboats.
- 3.3. Eligible boats shall either enter on line, or at the venue before 14h00 on Saturday 14<sup>th</sup> October.

#### 4. FEES

- 4.1. Entry fees are as follows:
  - 4.1.1. Juniors (< 19): R100.00 single-handed
  - 4.1.2. Juniors (< 19): R 150.000 double-handed
  - 4.1.3. Seniors single-handed: R150.00
  - 4.1.4. Seniors double-handed: R200.00
- 4.2. All Entry Fees to be paid by close of Registration; i.e. on Saturday before the skippers briefing. Payments by EFT to be completed by midnight on Wednesday 11<sup>th</sup> October,

and Proof of payment forwarded to the club secretary. Failure to meet this requirement will result in the affected yacht being recorded as Did Not Compete until the required payment/s are made, or Proof of Payment submitted. This changes rule A11 (DNC).

## 5. SCHEDULE

5.1. Registration: Saturday 14<sup>th</sup> October 2017 from 09h30 to 14h00.

5.2. Dates of racing:

- Saturday 14 October 2017 ~ Tour de Vlei. Skipper's briefing 14h00.
- Sunday 15 October 2017 ~ Fun racing or Speed Trial (Format to be decided – weather dependant).
- The scheduled time of the warning signal for the **Tour de Vlei on Saturday, 14<sup>th</sup> October 2017, is 14h30.**
- The scheduled time for the warning signal of any race/s on Sunday 15<sup>th</sup> October 2017 will be displayed on the regatta notice board: Skippers briefing 09:00; Start not before 09:30; No Start after 13:00

## 6. MEASUREMENTS

Spot measurements may be taken at any stage during the regatta.

## 7. SAILING INSTRUCTIONS

Sailing Instructions will be emailed to all club members, and to clubs. SI will also be available from the Regatta Secretary on completion of registration formalities.

## 8. VENUE

Racing will take place on Voëlvlei Dam, Western Cape.

## 9. THE COURSE

- 9.1. The diagrams in Addendum #1 show the general layout of the course.
- 9.2. A red flag flown from the bridge will indicate all buoys to be left to Port. A green flag flown from the bridge will indicate all buoys to be left to Starboard.
- 9.3. Marks to be positioned according to prevailing water level conditions, and indicated on the club Notice Board during the Skippers briefing.
- 9.4. Start/Finish Line: Between Two Marks In front of the Bridge.
- 9.5. Number of rounds for the various classes are as follows:
  - 9.5.1. Class 1: to complete one (1) round of the half circuit course.
  - 9.5.2. Classes 2 and 5: to complete one (1) round of the full circuit course.
  - 9.5.3. Class 3 & 4: To complete two (2) rounds of the full circuit course.
- 9.6. There will be no endurance category or event (no extra laps).

## **10. CONTINGENCY NOTICE**

Due to the unpredictability of the water level in the dam, the Race Committee may change the number of laps, depending on the final setting of the buoys. Any such change will be posted on the Race Notice Board before 12h00 on Saturday 14<sup>th</sup> October 2017.

## **11. SCORING**

All boats are scored according to the SAS Portsmouth Yardstick Handicap system.

## **12. SAFETY**

- 12.1. Yachts shall comply with their class buoyancy and safety requirements.
- 12.2. All competitors shall wear a personal buoyancy aid capable of supporting a 5-kg steel weight always while afloat in a yacht.
- 12.3. Wet or dry suits do not constitute adequate buoyancy.

## **13. SUPPORT BOATS**

Voëlvlei Dam is a reserve. Besides official Voëlvlei rescue craft, no other petrol driven support / coach vessels are allowed.

## **14. RADIO COMMUNICATION**

A boat shall neither make radio transmissions while racing nor receive radio communications not available to all boats. This restriction also applies to mobile telephones.

## **15. PRIZES AND PRIZEGIVING**

- 15.1.1. Cash prizes will be given in the following categories provided there are more than 3 boats in the category:
  - A: Small Dinghies: no spinnaker (Class 1)
  - B: Dinghies: no spinnaker (Class 2)
  - C: Dinghies over 15' & Cats: (Classes 3 & 4 combined)
  - D: Keelboats
- 15.1.2. Amounts:
  - 1<sup>st</sup> on handicap -: R 500
  - 2<sup>nd</sup> on handicap -: R 300
  - 3<sup>rd</sup> on handicap -: R 200
- 15.1.3. Many other prizes for Line Honours, the Sunday fun Race, and Lucky dip prizes.
- 15.1.4. Prizegiving for Tour de Vlei on Sunday at 14h30. If no racing on Sunday then prize-giving will be at 11:00

## **16. DISCLAIMER OF LIABILITY**

Competitors participate in the regatta entirely at their own risk. See RRS 4, Decision to Race. Neither the Organizing Authority nor its officials or other persons associated with the organization of the event will accept any liability for material damage or personal injury or death sustained in conjunction with or prior to, during, or after the regatta.

## **17. INSURANCE**

Each participating boat is encouraged to carry sufficient valid third-party liability insurance to cover any liability arising during the event.

## **18. FURTHER INFORMATION**

For further information please contact:

**John Mossner:** 084 8000 9509 or [sailing@vyc.co.za](mailto:sailing@vyc.co.za)

**Bev Shaw:** 083 229 8030 or [bevscallanetics@gmail.com](mailto:bevscallanetics@gmail.com)

# ADDENDUM #1

## Full Circuit Course

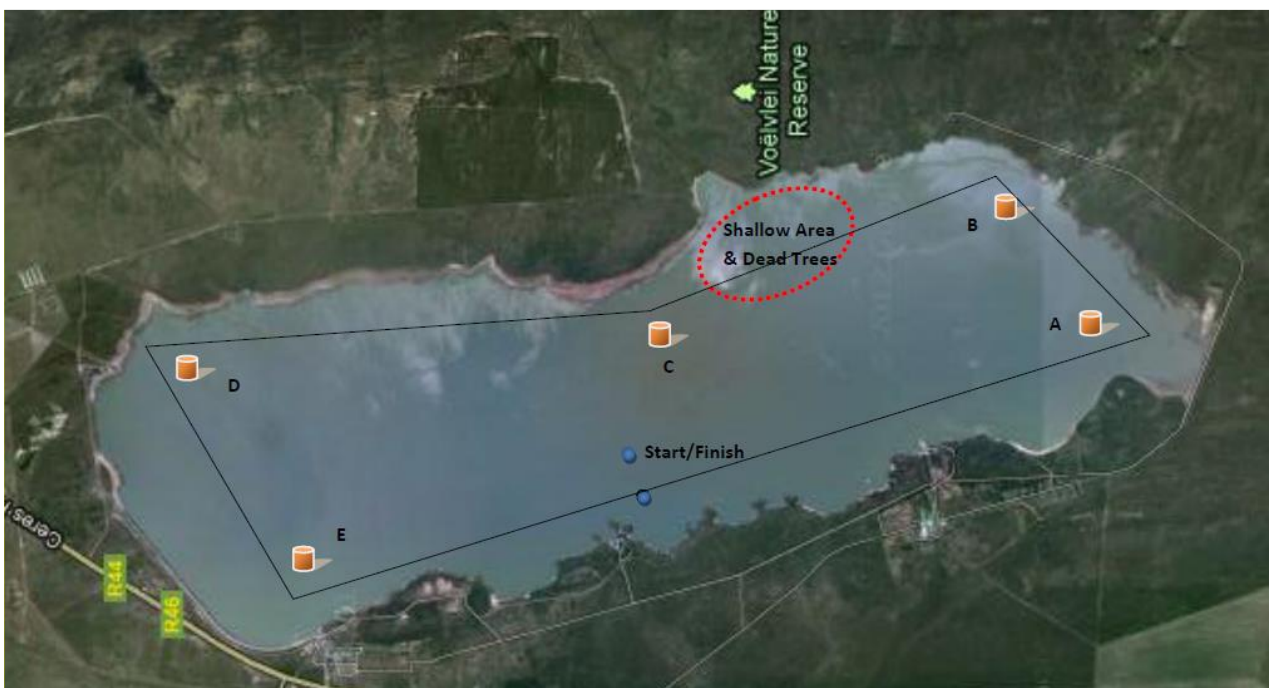
Please Note: Buoy C is not a mark on this course.

Class 2 & 5: One Round. (ABCDE or EDCBA)

Class 3 & 4: Two (2) Rounds.

Green Flag flown from bridge indicates NW wind and starboard roundings (clockwise).

Red Flag flown from bridge indicates Southerly wind with Port roundings (anti-clockwise).



## Half Circuit Course

**Class 1: One (1) Round (EDC S/F)**

**To be sailed when Green Flag is flown**



**Or**

**Class 1: One (1) Round (ABC S/F)**

**To be sailed when Red Flag is flown**

